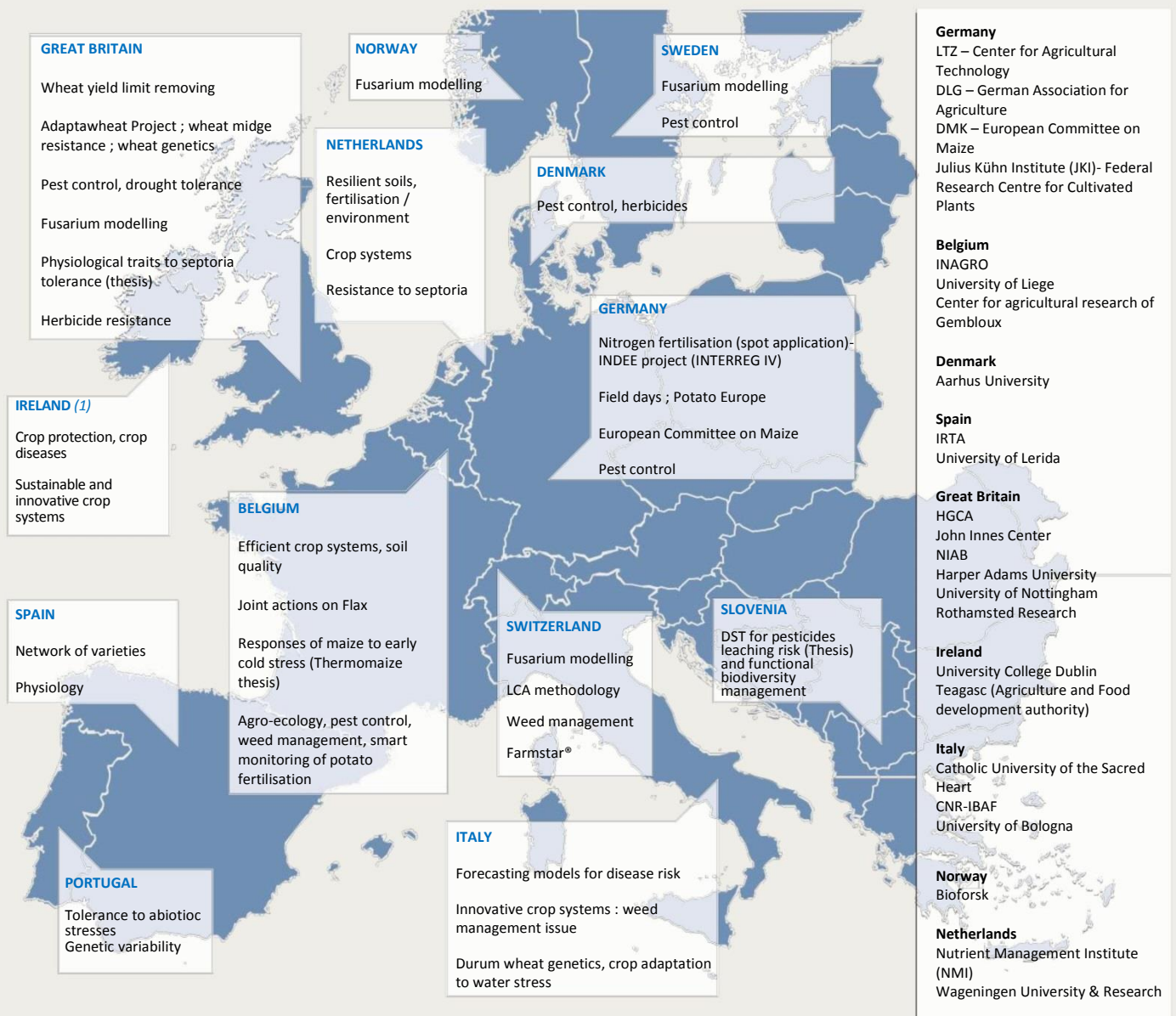


INTERNATIONAL : LONG TERM PARTNERSHIPS

ARVALIS HAS CREATED INTERNATIONAL CONTACTS AND COLLABORATIONS TO IMPLEMENT PROJECTS AROUND INNOVATION IN AGRICULTURE.



EUROPEAN NETWORKS

European Association for Potato Research
European committee of forage maize
European Association on tobacco research and experiment

USA

University of Michigan State : GxE interactions in forecasting models of wheat varietal behaviour (2)
University of Penn State : Genomics of dynamic traits
University of Kentucky : Tobacco harvest and post-harvest

AUSTRALIA

CSIRO : Adaptawheat

MEXICO

CIMMYT : Wheat genetics

INTERNATIONAL NETWORKS

[Agribenchmark : Production cost evaluation](#)
Wheat Initiative : Coordination of wheat research



(1) "Ireland / France : high tech grazing

A forage specialist from ARVALIS has been hosted for 6 months as a visitor scientist at the TEAGASC in Ireland. He worked on the technology of digital barriers implemented on fields for dairy cows, and on the calibration of a new tool to measure grass height (European project ICT Grazing Tools). The work aims at an automated management of a dairy herd."

(2) "GUSTAVO DE LOS CAMPOS,
University of Michigan State, USA

« I started working with ARVALIS in 2012 on a GxE interactions. We developed statistical methods to express the interaction between environment and genetic potential expression. Results have been published in the scientific journal « Theoretical and Applied Genetics »."